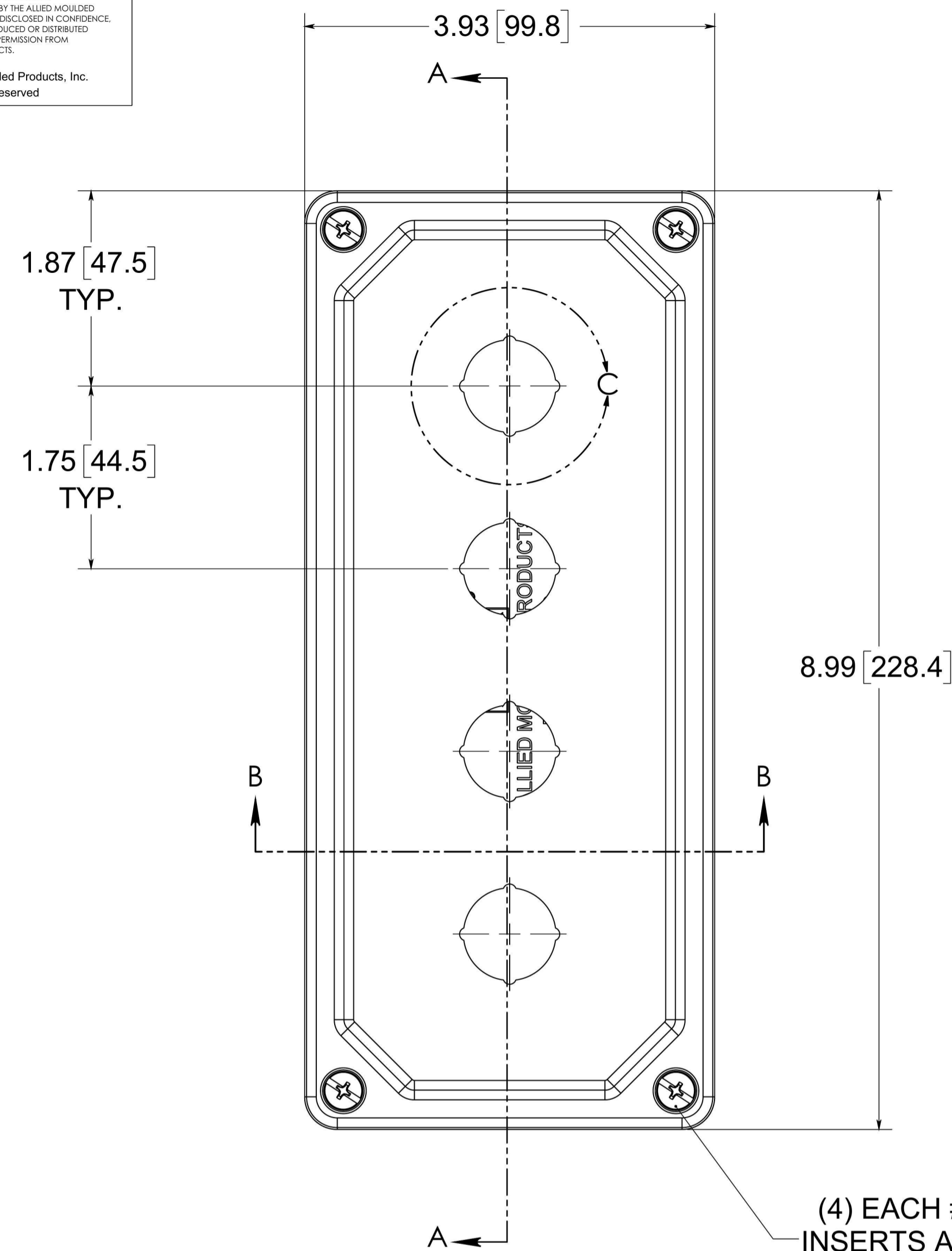
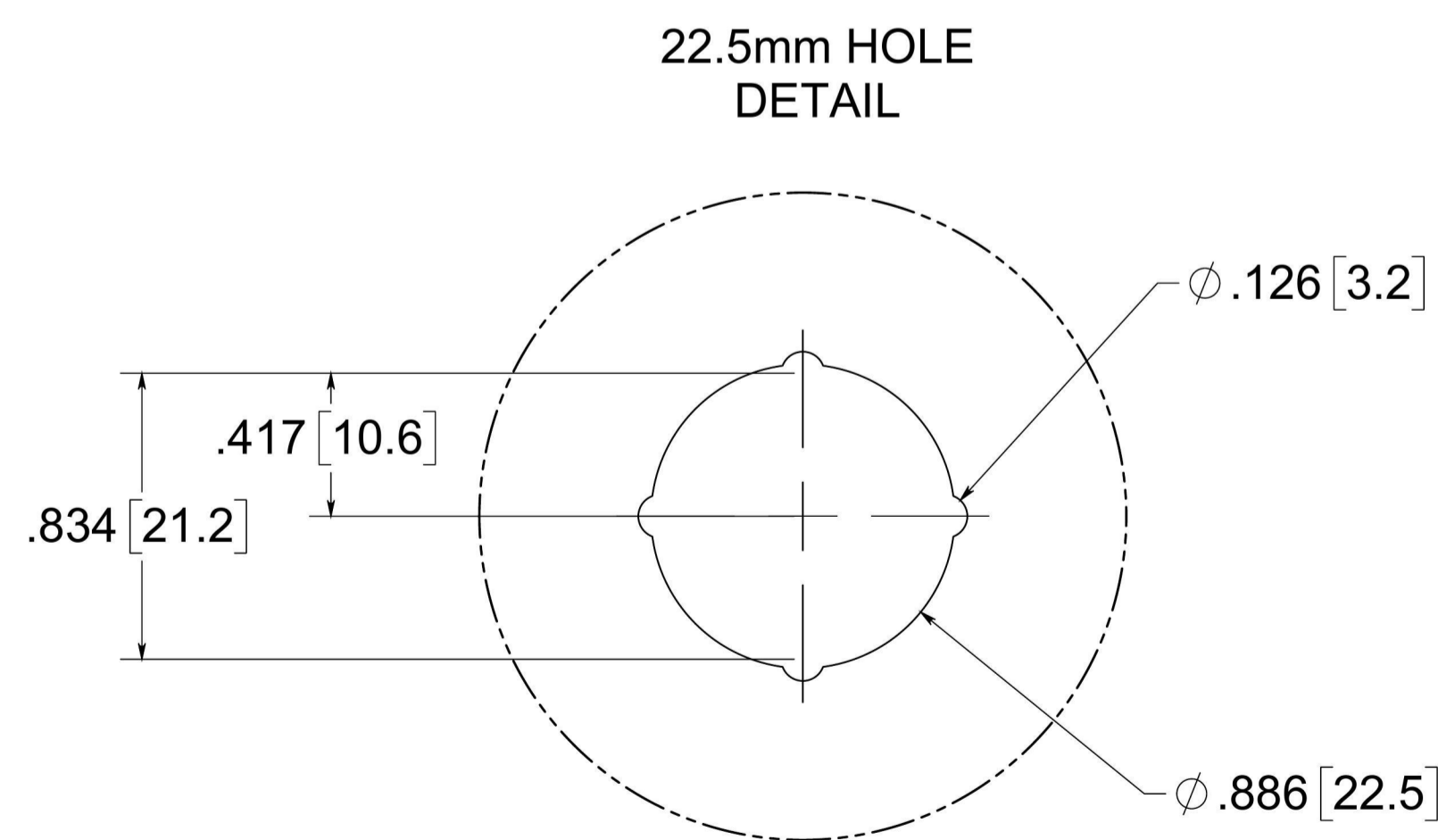
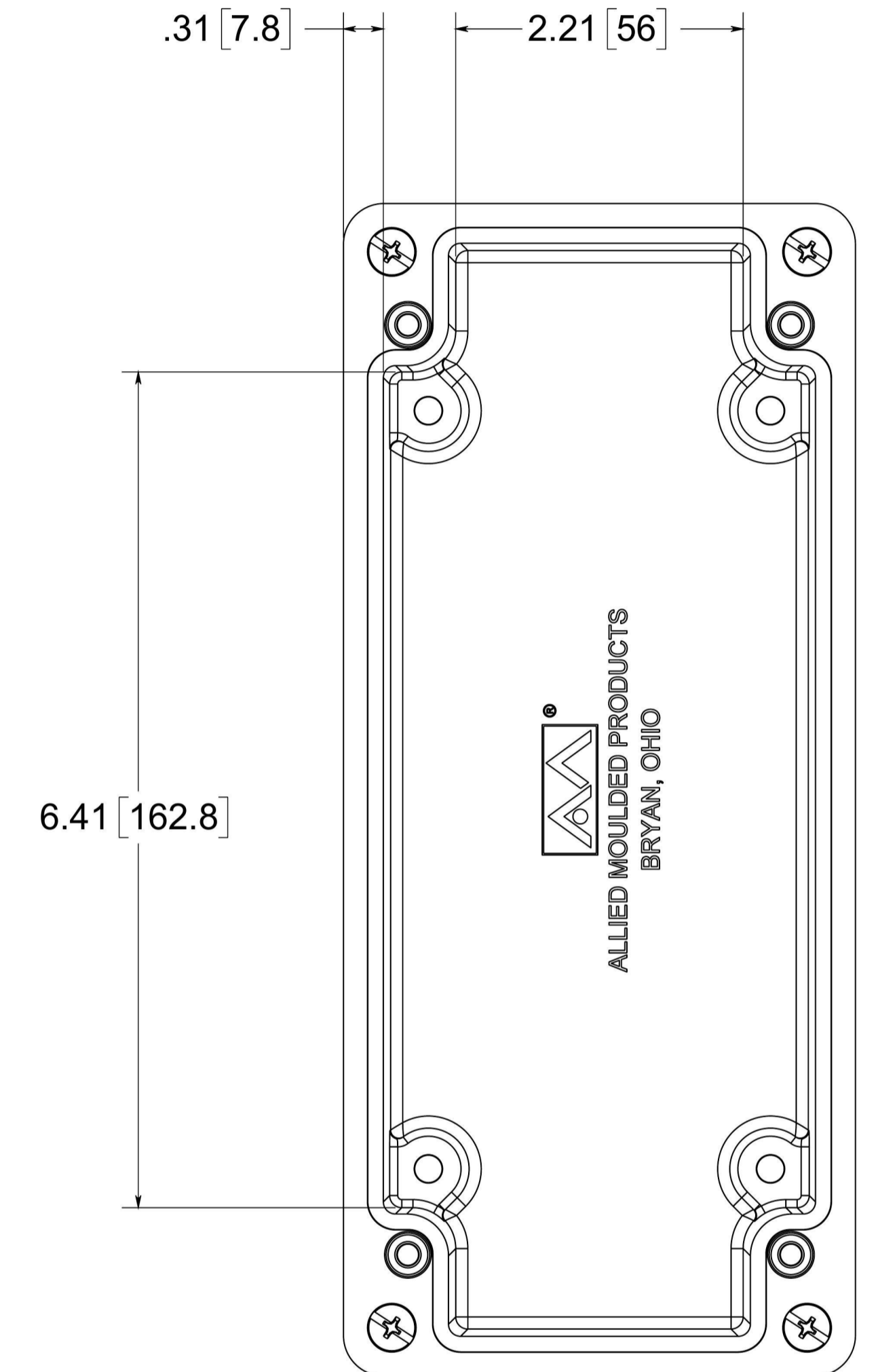
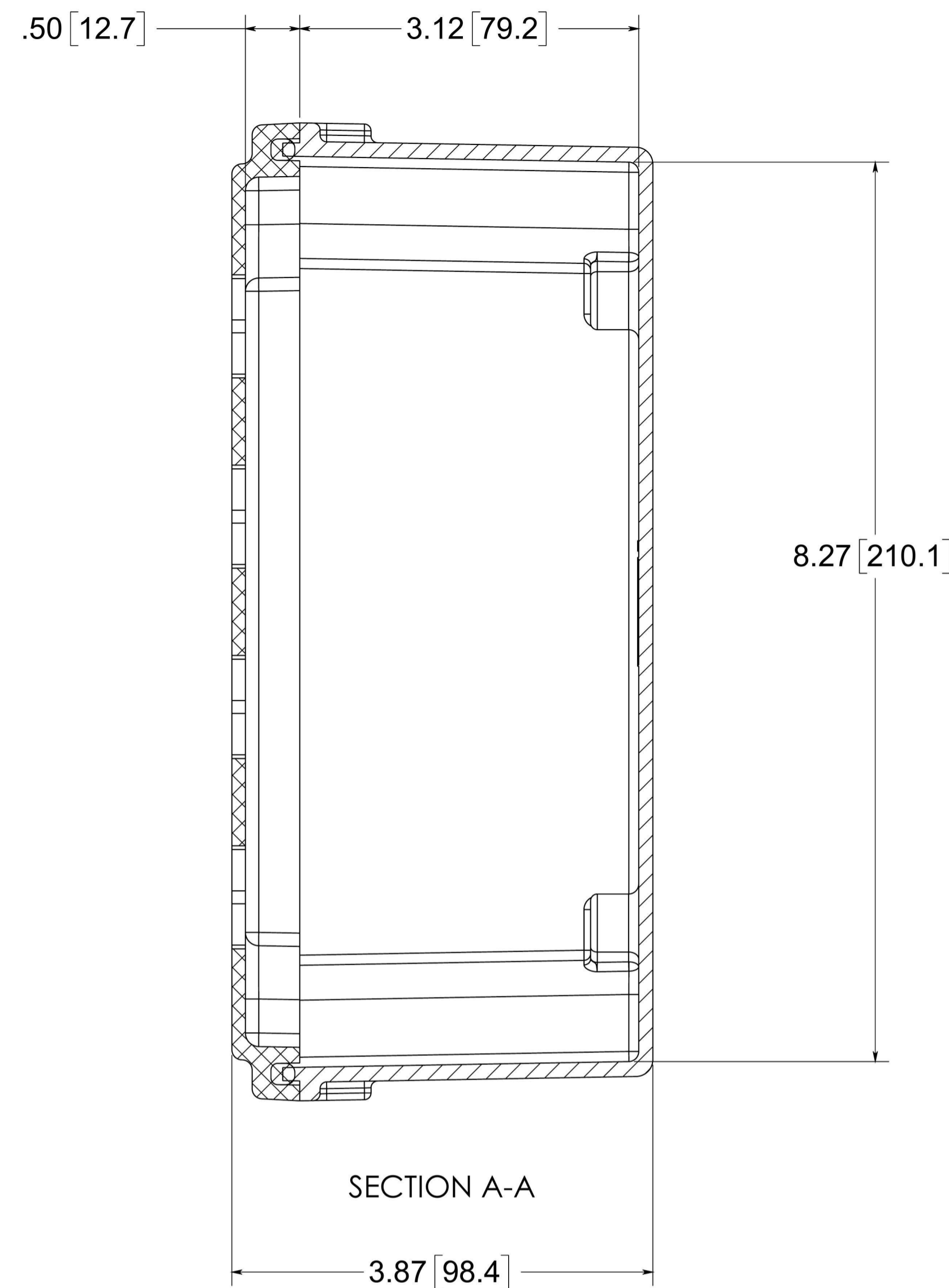
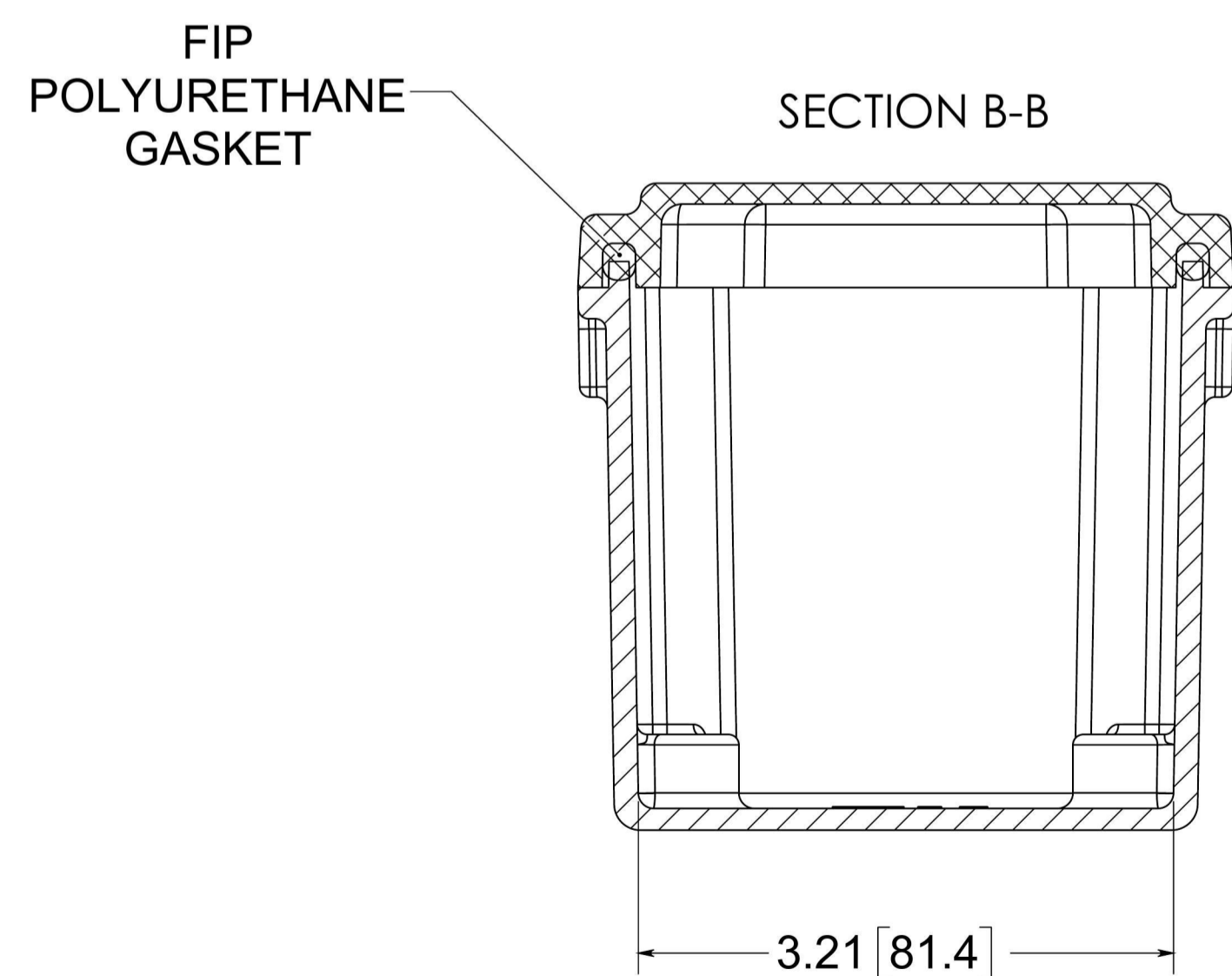


CONFIDENTIAL
 THIS MATERIAL IS OWNED BY THE ALLIED MOULDED PRODUCTS COMPANY. IT IS NOT TO BE REPRODUCED OR DISTRIBUTED WITHOUT PRIOR WRITTEN PERMISSION FROM ALLIED MOULDED PRODUCTS.
 © CopyRight Allied Moulded Products, Inc. All Rights Reserved

Date	Rev	Description	ECN No.	DR	CK	REL
07/05/2017	01	INITIAL RELEASE	ECN-12131	SMZ	GFR	GEL
-	-	-	-	-	-	-
-	-	-	-	-	-	-



(4) EACH #10-32 BRASS INSERTS AND STAINLESS STEEL COVER SCREWS



DETAIL C
 SCALE 2 : 1

NOTE:
 DATA SUBJECT TO CHANGE WITHOUT NOTICE

MATERIAL:
 BOX & COVER - COMPRESSION MOLDED FIBERGLASS REINFORCED POLYESTER

DRAWING STAMP		MOLD VERSION		PROJECT NO.	ASSET NO.	BOM PART NO.
FOR QUOTATION ONLY		<MOLD VERSION>				
UNLESS OTHERWISE SPECIFIED: DIMENSIONS ARE IN INCHES		STANDARD SYMBOLS		ALLIED MOULDED PRODUCTS BRYAN, OHIO The Original Fiber Glass Outlet Box		
TOLERANCES: .XX = ±.01 .XXX = ±.005		D = MINUS DRAFT M = MATCH DRILL 1 = 1° DRAFT 3 = 3° DRAFT S = STEEL SAFE				
MACHINED SURFACES: 125 OR BETTER		DRAWING SIZE		DESCRIPTION		
FRACTIONAL ± 1/64 PERPEND. ∟ .005°		SHEET 1 OF 1		AM Series		
ANGULAR ± 0°30' CONCEN. ∘ .005°		DO NOT SCALE		DRAWN: SMZ 6/15/2017		
				MATERIAL: SEE BOM		
				FINISH/TREATMENT: SEE NOTES		
				SMZ CHECK: 07/05/2017		
				GFR CHECK: 07/13/2017		
				GFR RELEASED: 07/13/2017		
				GEL		
				PART NUMBER: AM4PB22		
				REV: 01		